



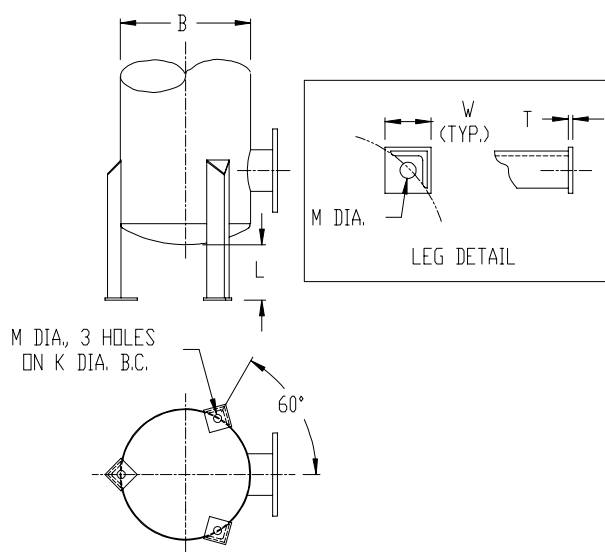
Accessories Mounting Supports Type A & B Mounting Legs

B	L	M	W	T	K	APPROX. WEIGHT	
						3 LEGS	4 LEGS
10	5	7/8	2 1/2	1/4	10	13	18
12	5	7/8	2 1/2	1/4	12	13	18
14	5	7/8	2 1/2	1/4	14	13	18
16	5	7/8	2 1/2	1/4	16	13	18
18	5	7/8	2 1/2	1/4	18	13	18
20	5	1	4	3/8	20	36	48
22	5	1	4	3/8	22	36	48
24	5	1	4	3/8	24	36	48
26	5	1	4	3/8	26	36	48
28	5	1	4	3/8	28	36	48
30	5	1	4	3/8	30	36	48
36	5	1 1/4	6	1/2	36	66	89
42	5	1 1/4	6	1/2	42	66	89
48	5	1 1/4	6	1/2	48	66	89
54	6	1 3/8	8	3/4	54	200	266
60	6	1 3/8	8	3/4	60	200	266
66	6	1 3/8	8	3/4	66	200	266
72	6	1 3/8	8	3/4	72	200	266
78	6	1 3/8	10	1	78	535	710
84	6	1 3/8	10	1	84	535	710
90	6	1 3/8	10	1	90	535	710

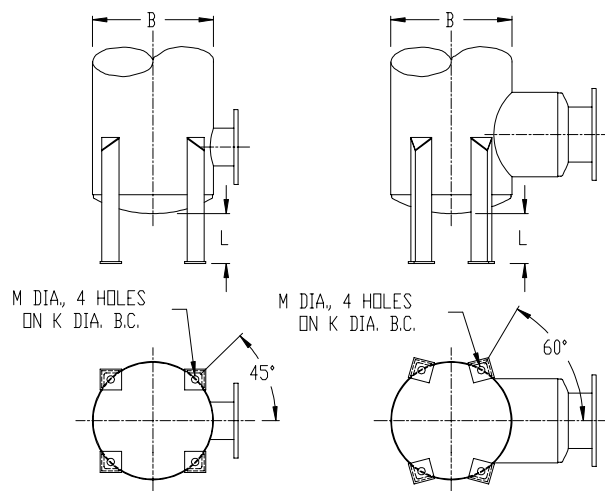
- 'L' = standard dimension; minimum 'L' dimension = 0 inches; maximum 'L' dimension = 12 inches at no extra charge.

Dimensions in inches, weights in pounds. Dimensions and weights are nominal and may vary slightly with production models. Request certified drawings for exact dimensions.

Type A - Mounting Legs



Type B - Mounting Legs





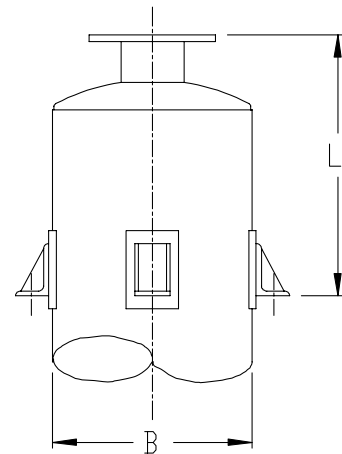
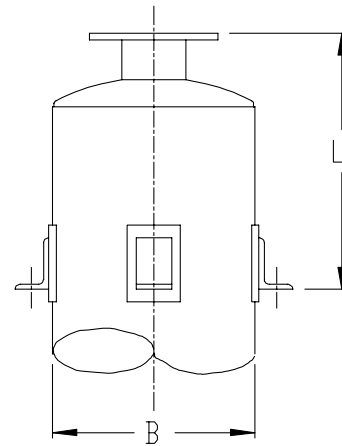
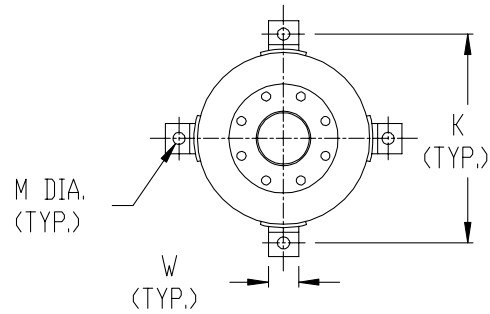
Accessories

Mounting Supports Type D - Shell Lug Supports - Vertical

B – Body Diameter	M	K	W
10	5/8	13 1/4	2
12	5/8	15 1/4	2
14	5/8	17 1/4	2
16	5/8	19 3/8	2
18	5/8	21 3/8	2
20	5/8	23 3/8	2 1/2
22	5/8	25 3/8	2 1/2
24	5/8	27 3/8	2 1/2
26	5/8	30 5/8	2 1/2
28	5/8	32 5/8	2 1/2
30	7/8	34 5/8	3 1/2
32	7/8	36 5/8	3 1/2
34	7/8	38 5/8	3 1/2
36	7/8	40 5/8	3 1/2
42	7/8	46 5/8	3 1/2
48	7/8	52 7/8	3 1/2
54	1 1/8	59 3/4	4
60	1 1/8	65 3/4	4
66	1 1/8	71 3/4	4
72	1 1/8	77 3/4	4
84	1 1/8	89 3/4	6
96	1 1/8	101 3/4	6

Standard 'L' = 1/3 of 'D' or per customer specifications.

Dimensions in inches, weights in pounds. Dimensions and weights are nominal and may vary slightly with production models. Request certified drawings for exact dimensions.





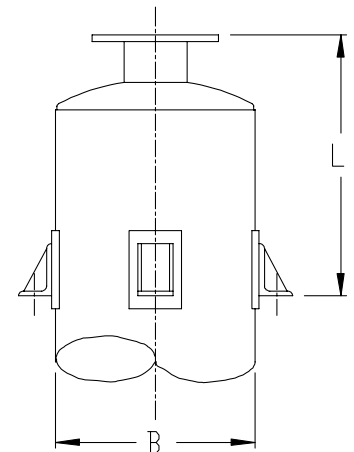
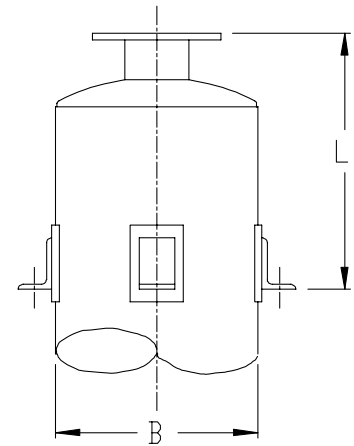
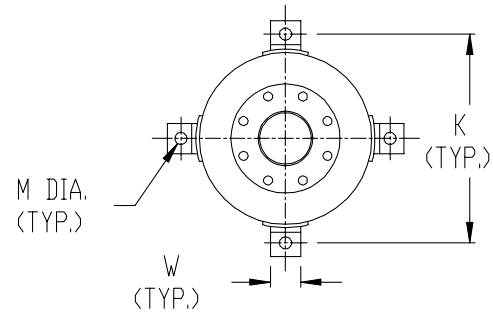
Accessories

Mounting Supports Type E - Shell Lug Supports - Horizontal

B – Body Diameter	M	K	W
10	1/2	13 1/4	2
12	1/2	15 1/4	2
14	1/2	17 1/4	2
16	1/2	19 3/8	2
18	1/2	21 3/8	2
20	5/8	23 3/8	2 1/2
22	5/8	25 3/8	2 1/2
24	5/8	27 3/8	2 1/2
26	5/8	30 5/8	2 1/2
28	5/8	32 5/8	2 1/2
30	7/8	34 5/8	3 1/2
32	7/8	36 5/8	3 1/2
34	7/8	38 5/8	3 1/2
36	7/8	40 5/8	3/12
42	7/8	46 5/8	3 1/2
48	7/8	52 7/8	3 1/2
54	1 1/8	59 3/4	4
60	1 1/8	65 3/4	4
66	1 1/8	71 3/4	4
72	1 1/8	77 3/4	4
84	1 1/8	89 3/4	6
96	1 1/8	101 3/4	6

Standard 'L' = 1/4 of 'D' or per customer specifications.

Dimensions in inches, weights in pounds. Dimensions and weights are nominal and may vary slightly with production models. Request certified drawings for exact dimensions.

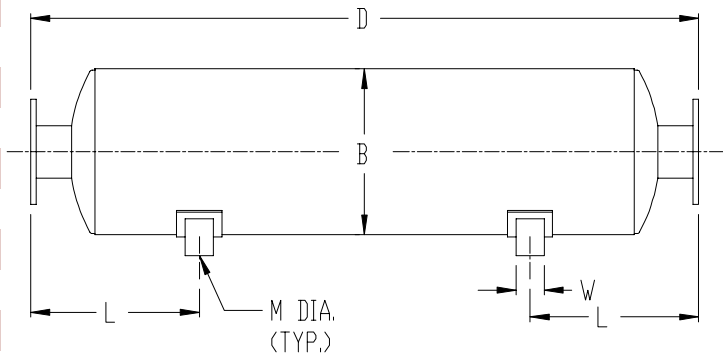
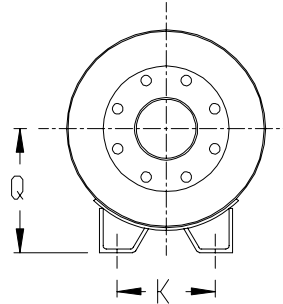




Accessories

Mounting Supports Type F - Saddle Supports - Horizontal

B – Body Diameter	M	K	W	Q
10	1/2	5	2 1/2	7
12	1/2	6	2 1/2	8
14	1/2	7	2 1/2	9
16	1/2	8	2 1/2	10
18	1/2	9	2 1/2	10.5
20	1/2	10	2 1/2	11.5
22	5/8	11	2 1/2	12.5
24	5/8	12	2 1/2	14.5
26	5/8	13	2 1/2	15.5
28	5/8	14	2 1/2	17
30	5/8	15	2 1/2	18
32	5/8	16	3 1/2	19
34	7/8	17	3 1/2	19.5
36	7/8	18	3 1/2	20.5
42	1 1/8	21	3 1/2	24
48	1 1/8	24	3 1/2	28
54	1 1/8	27	3 1/2	30.5
60	1 1/8	30	3 1/2	33
66	1 1/8	33	3 1/2	36
72	1 1/8	36	3 1/2	39
84	1 1/8	42	6	44
96	1 1/8	48	6	49.5



Standard 'L' = 1/4 of 'D' or per customer specifications.

Dimensions in inches, weights in pounds.
 Dimensions and weights are nominal and may vary slightly with production models. Request certified drawings for exact dimensions.